

How to apply window film

Easy installation - Please read thoroughly before starting

The film has a very strong adhesive backing. It is very important that you work in dust free conditions.

Do not work on carpet.

Do not wear clothes with loose fibres.

Do not fit the film in strong sunlight.

Apply the film from the inside of the room.

Apply the films to flat and smooth surface glass only.

Window film can be removed after installation, but cannot be reused.

Each piece of film is numbered as specified on your order. Check all measurements before starting.

Tools you will need:

Methylated spirit

Window scraper

Credit card

Spray bottle containing detergent solution (2 drops of washing liquid per pint of water)

An assistant

A pin

HB pencil*

Masking tape*

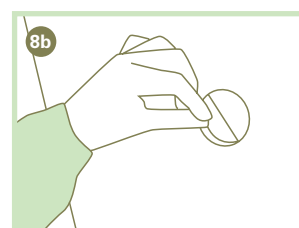
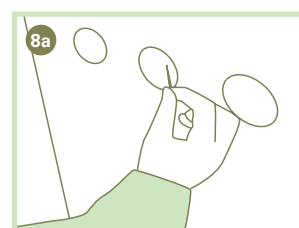
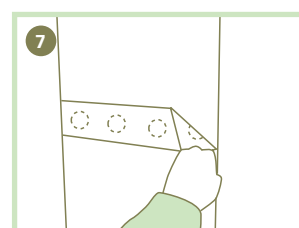
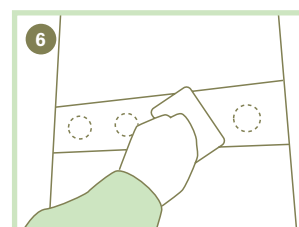
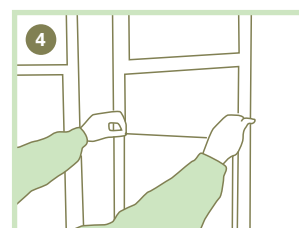
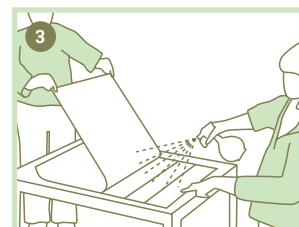
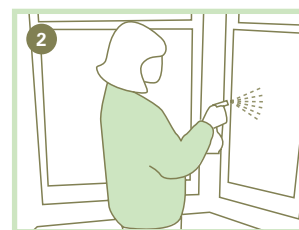
*Safety Spots only

Instructions

- 1 Thoroughly clean the window. Go over the entire window with the scraper to remove all loose particles, fibres, paint spots and irregular putty lines, to produce a perfectly clean window with straight edges.
Clean glass with methylated spirit.
- 2 Spray window with plenty of detergent solution
- 3 Clean hands are essential. Lay the film, face down, on a clean, dust free, flat surface. Working with your assistant, hold the film in the top two corners, while your assistant carefully peels off the backing paper. While peeling, generously spray (using a fine spray) the sticky surface with plenty of detergent solution. You can touch the sticky side when wet, but very sparingly.
- 4 Holding the top two corners of the film with finger and thumb, carefully offer the sticky side of the film to the window.
- 5 Manoeuvre the film into position and lightly press in place.
- 6 When it is in the correct position, starting from the centre, carefully remove solution and bubbles by running the credit card over the film. **BE GENTLE**. Check from the outside that all bubbles are removed. If not, run over the film again.
- 7 Leave the film for 3 - 4 hours, then carefully remove the carry tape protecting the cut out shapes. (The film may lift off slightly, but can be smoothed back in place as before once the carry tape is removed).
- 8 With a pin, pick out the relevant shapes. Finally, run over the film and cut-out edges again with the credit card. Check again on the exterior for any air bubbles and smooth out again if necessary.

Care

Clean windows as normal. Damage may occur if the film comes into contact with hard or sharp edges.



How to apply safety spots

Tools you will need:

Methylated spirit

Window scraper

Credit card

Spray bottle containing detergent solution (2 drops of washing liquid per pint of water)

An assistant

HB pencil*

Masking tape*

*Safety Spots only

Instructions

- 1 Thoroughly clean the window. Go over the entire window with the scraper to remove all loose particles, fibres, paint spots and irregular putty lines, to produce a perfectly clean window with straight edges.
Clean glass with methylated spirit.
- 2 Position masking tape to mark the base line.
- 3 Mark the tape at the points you wish the spots to go.
- 4 Spray glass with detergent solution
- 5 Clean hands are essential. Carefully peel off each spot, and spray with a little detergent solution. You can touch the sticky side when wet, but very sparingly. Position each spot where required and carefully remove the solution bubbles by running a credit card over the film. BE GENTLE.
- 6 When all spots are in position, carefully remove masking tape.
- 7 The spots should be thoroughly fixed within 24 hours.

Care

Clean windows as normal. Damage may occur if the film comes into contact with hard or sharp edges.

How remove window film

You will need:

Rubber gloves

Sponge

Instructions

DO NOT try to remove the film if the glass is very cold. The film will also be easier to remove if the window is warm. Sunlight, a warm radiator, a fan heater or hairdryer may help to warm and soften the film. **DO NOT** use extreme heat directly onto the glass, particularly if it is cold, as this may crack the window pane.

- 1 Sponge the window with hot water.
- 2 Peel away the film at one corner and work along the shortest edge, lifting off the film and sponging with hot water to soften the glue. Do not pull too hard.
- 3 Clean the glass with a scraper and methylated spirit.



GLAZING FILMS
INTERIORS